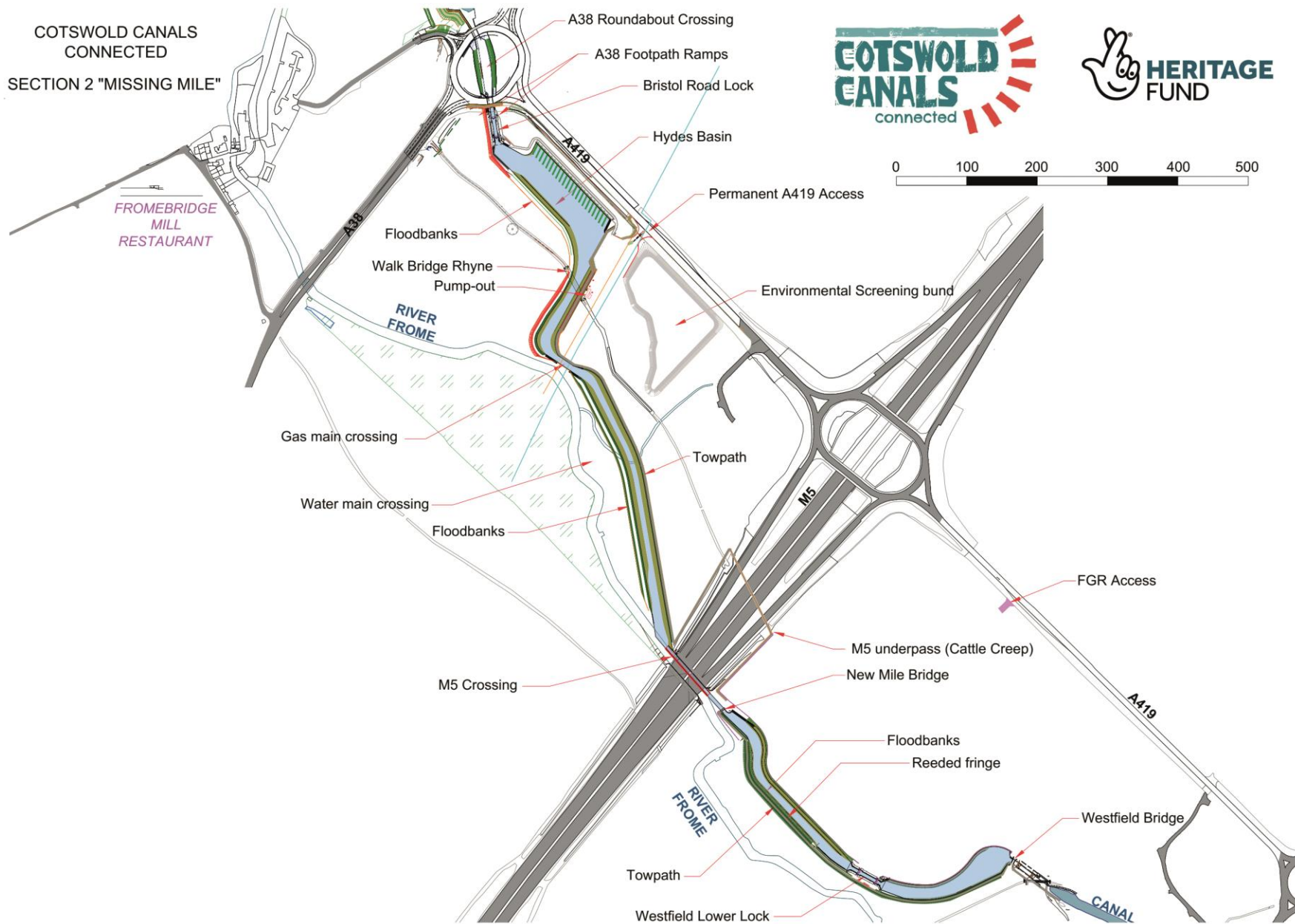




www.cotswoldcanals.org

MISSING MILE

COTSWOLD CANALS
CONNECTED
SECTION 2 "MISSING MILE"



MISSING MILE – OLD & NEW ROUTES



WHITMINSTER – RIVER FROME CONNECTION



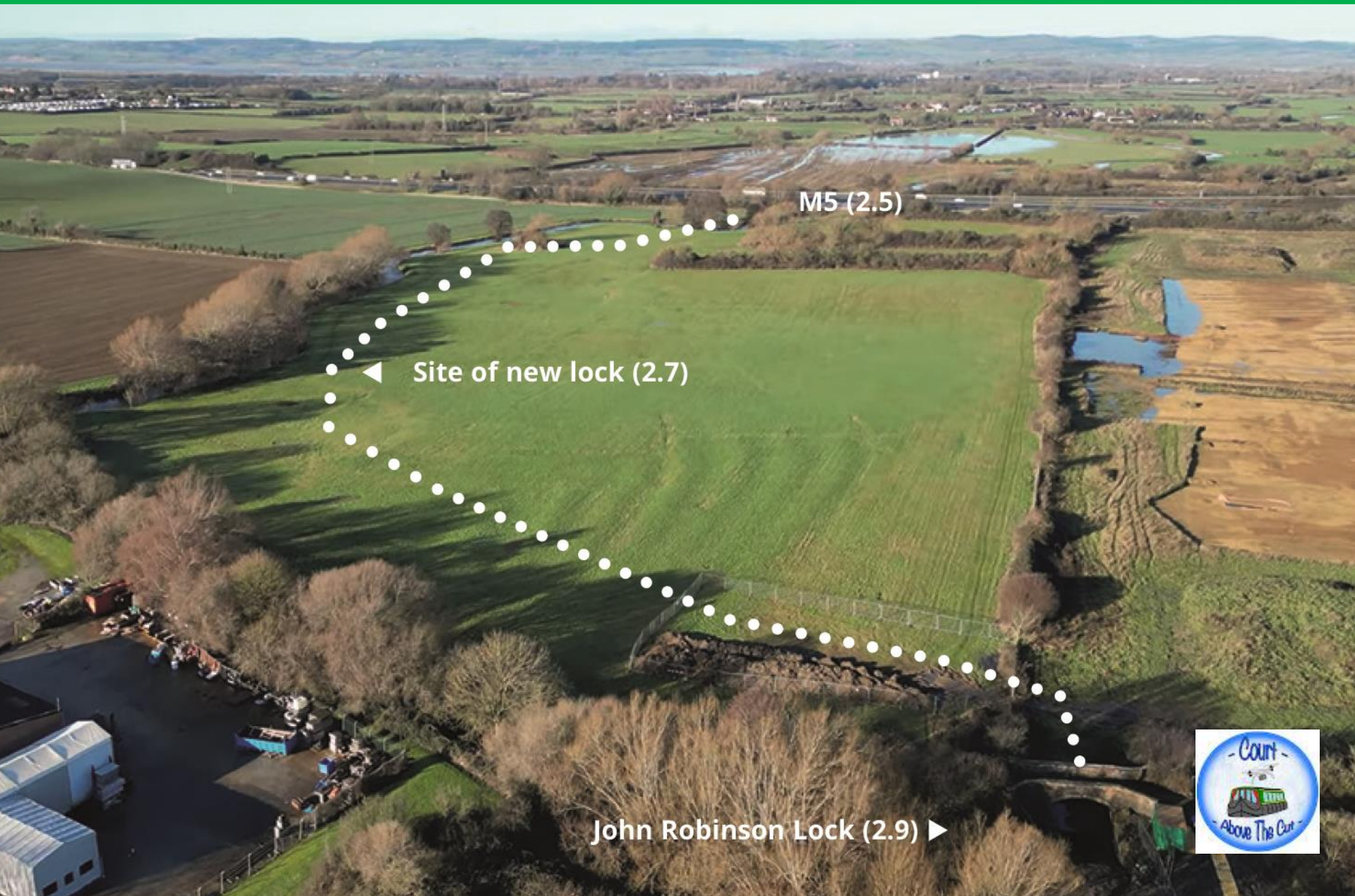
MISSING MILE – WEST OF M5



A38 roundabout (2.1) ►



MISSING MILE – EAST OF M5



M5 (2.5)

Site of new lock (2.7)

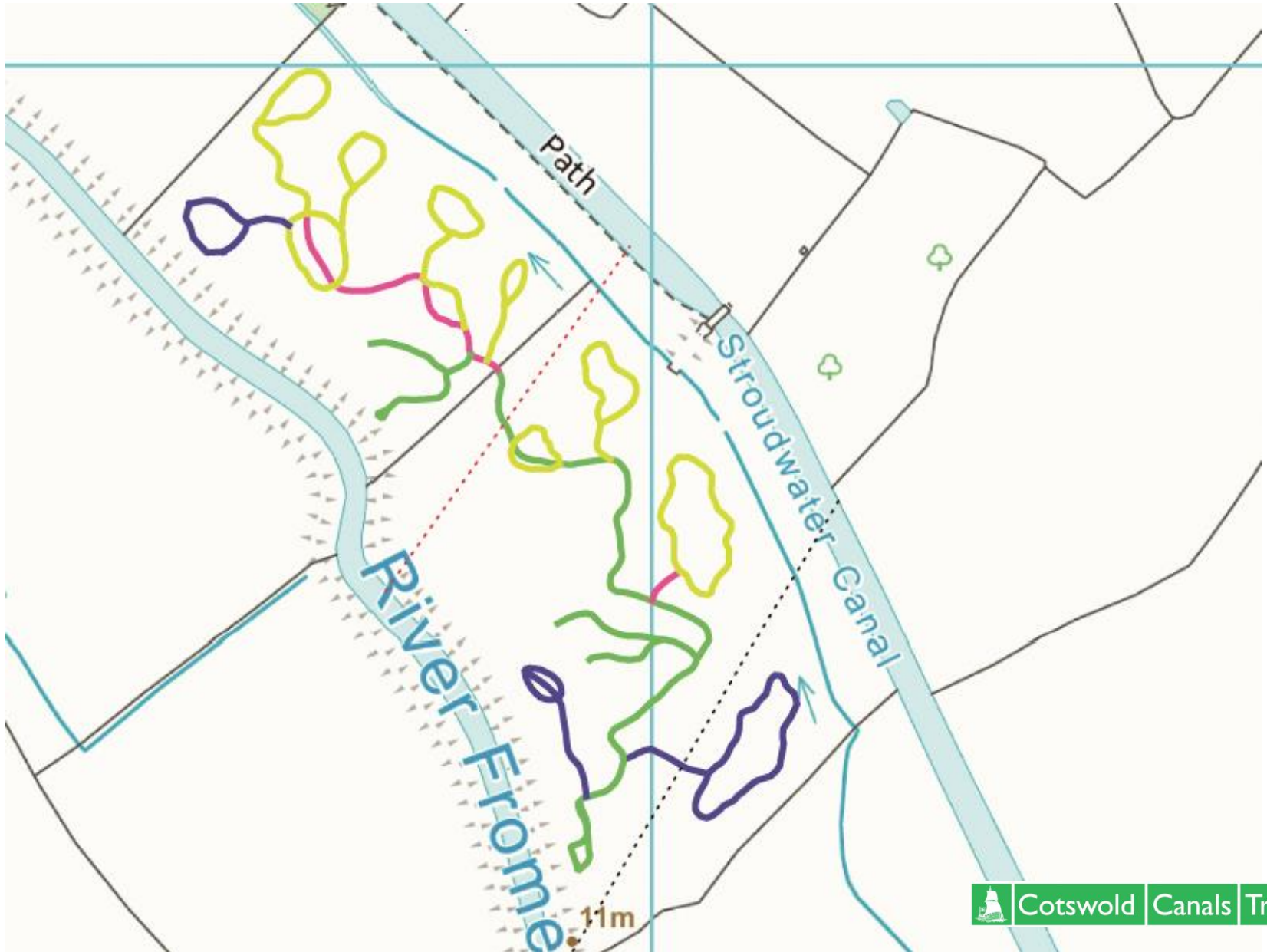
John Robinson Lock (2.9)



WILDLIFE ZONES AT WHITMINSTER



SCRAPES PLAN AT WHITMINSTER



ROTARY DITCHER CREATES SCRAPES



SCRAPES CREATED



CANAL

OCCUPATION
BRIDGE

RIVER

TO A38 ▷



SCRAPES IN OCTOBER



WHITMINSTER DREDGING PREPARATIONS



WHITMINSTER DREDGING COMPOUND



JOHN ROBINSON LOCK - BEFORE



JOHN ROBINSON LOCK – W.I.P.



WESTERN DEPOT



NEWTOWN LOCK



TOWPATH AT NEWTOWN - BEFORE



TOWPATH AT NEWTOWN - DURING



TOWPATH AT NEWTOWN – BEFORE & AFTER



TOWPATH AT NEWTOWN - THE TEAM



DREDGING AT HOFFMAN'S DAM, STONEHOUSE



OCEAN MEADOWS SILT SITE



DREDGING AT STONEHOUSE – 13 NOV 2023



HARPER'S FIELD – NEW DOCK



HOGG'S MEADOW



HOGG'S MEADOW - TOWPATH DIVERSION

Hoggs Meadow Towpath Diversion For Silt Unloading

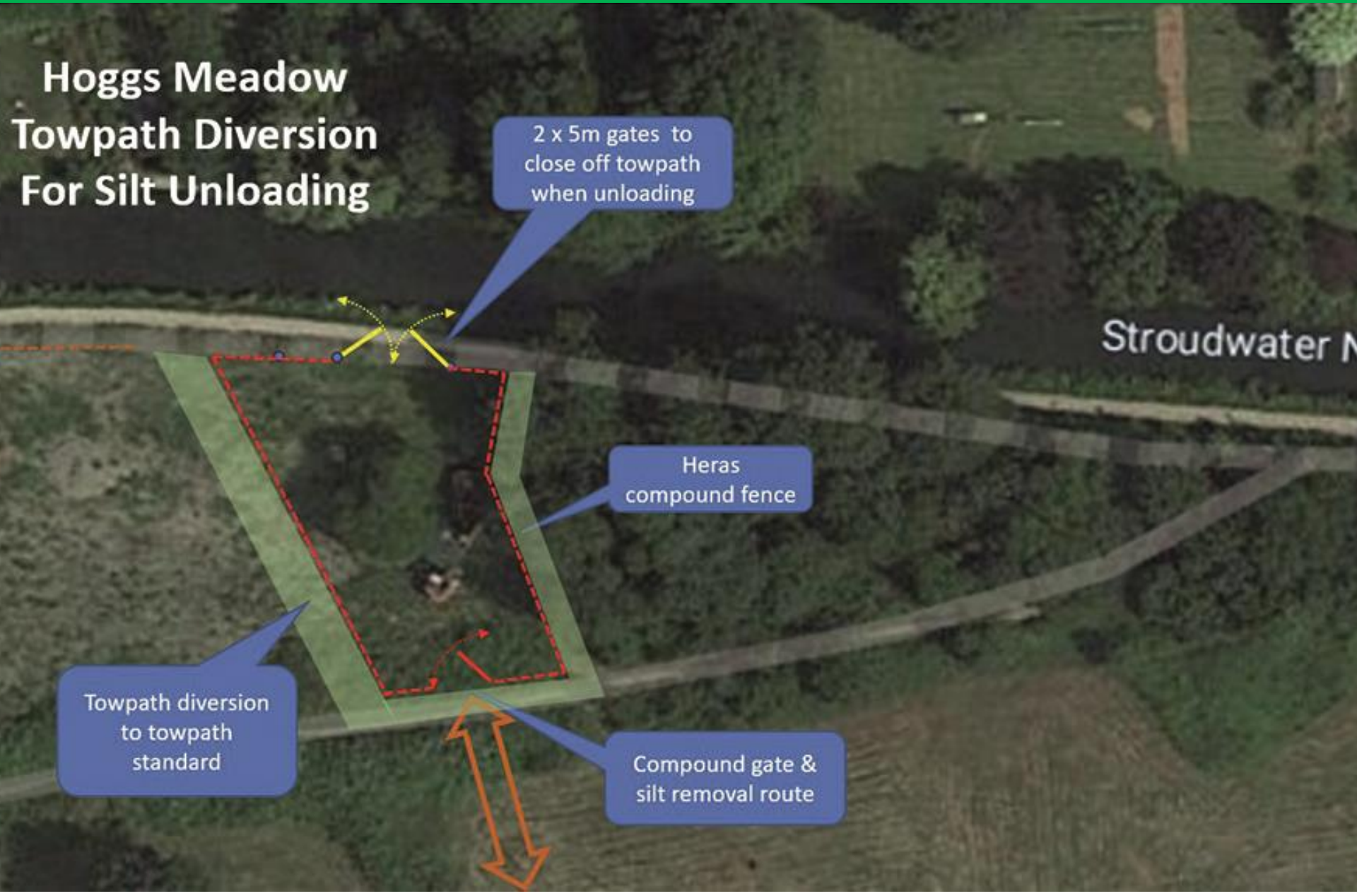
2 x 5m gates to
close off towpath
when unloading

Stroudwater N

Heras
compound fence

Towpath diversion
to towpath
standard

Compound gate &
silt removal route



HOGG'S MEADOW



DUDLEY, PILING-DREDGING-LOGISTICS BARGE



DUDLEY AT THRUPP



CANAL SPRING FESTIVAL

